



# UNILUX bringing quality to light



M

**METALS**

**SURFACE INSPECTION LIGHTING**



From steel plate to aluminum foil and from hot mills to finishing lines, only UNILUX can let you know what's going on every step of the way.



UNILUX gives you the flexibility to inspect 100% of the strip anywhere in your operation. Finding defects fast and efficiently, no matter where they are in the process, reduces scrap and down time.



Remote camera systems provide the ability to inspect in inaccessible or dangerous areas and provides immediate knowledge of problems as they occur rather than several processes later when value added dollars are lost.



UNILUX allows you to inspect in tight areas thereby eliminating costly and inefficient secondary inspection.



UNILUX gives you real time information of roll wear, knife wear and chatter allowing even the most inexperienced operator to inspect the strip's quality, easily spotting any of the 100+ types of potential flaws.



Whether you need to inspect in areas where wrecks can occur or slower applications where the operators can get right on the strip - UNILUX has the light for you.



If you have a wide open space or no space at all...UNILUX has a light to help bring Quality to Light.



The Complete Line of UNILUX  
Surface Inspection Lighting for

# METALS

## NARROW STRIP

### Guardian



Medium web, flood pattern coverage in a small package. Provides superior, even illumination of areas 40cm x 50cm at 45cm distance.

#### FEATURES

- Highly concentrated light
  - 9600 flashes/minute
- External or internal trigger
  - Intensity control
  - Extra long life lamp

#### ENERGY OUTPUT

0.5 joules @ 6000 fpm  
0.38 joules @ 9600 fpm

#### LIGHT OUTPUT

2700 lux @ 0.3m at 6000 fpm  
2040 lux @ 0.3m at 9600 fpm



### Miti-Lite



Provides portability and power in a flood pattern. Three flash ranges of 6,000, 12,000 and 18,000 flashes/minute. Illuminates a 76cm x 76cm area from 76cm.

#### FEATURES

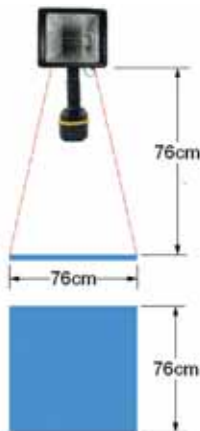
- 4-Digital LED readout
- Intensity & flash range selection
- External or internal trigger
- Easily syncs to video cameras
- Phase control of external trigger

#### ENERGY OUTPUT

.85 joules @ 100% intensity

#### LIGHT OUTPUT

900 lux @ 1m  
100% intensity/6000 range



### Cadet



Where lights cannot be mounted near the web, the Cadet provides coverage of 90cm x 90cm at 1.2m distance. Requires remote controller.

#### FEATURES

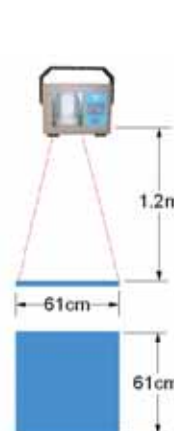
- Quick change power module
  - Snap in lamp assembly
- External or internal trigger
- Automatic line speed tracking
- Deluxe or micro remote control

#### ENERGY OUTPUT

2 joules @ 6000 fpm  
1.7 joules @ 3600 fpm

#### LIGHT OUTPUT

1070 lux @ 1.2m at 6000 fpm  
630 lux @ 1.2m at 3600 fpm



### LOL-20



Medium webs and line speed tracking. Covers area 1.25m x 80cm at 80cm distance. Interconnect up to 4 other units for wider areas or two side inspection.

#### FEATURES

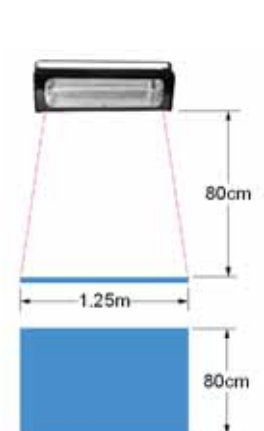
- 5-Digital LED readout
- Harmonic buttons (X2)/(/2)
  - Variable intensity
- Automatic line speed tracking
- Optional remote control

#### ENERGY OUTPUT

2.5 joules @ 3000 fpm  
1.25 joules @ 6000 fpm

#### LIGHT OUTPUT

2400 lux @ 0.3m at 3000 fpm  
1600 lux @ 0.3m at 6000 fpm



All units:

- Are designed for environments within the metal industries
- Deliver the highest power and the most uniform illumination
- Can interconnect for ultimate versatility
- Provide 100% inspection of strips from 10cm to 3 meters



## WIDE STRIP

### LOL-40



Wide webs and line speed tracking. Covers area 1.80m x 40cm at 80cm distance. Interconnect up to 4 other units for wider areas or two side inspection.

#### FEATURES

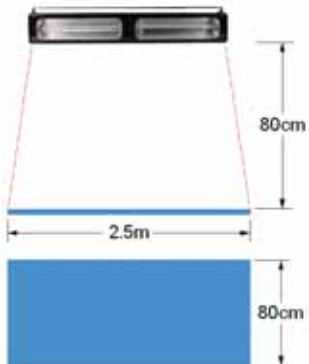
- 5-Digital LED readout
- Harmonic buttons (X2)/(/2)
  - Variable intensity
- Automatic line speed tracking
- Optional remote control

#### ENERGY OUTPUT

2.5 joules @ 3000 fpm  
1.25 joules @ 6000 fpm

#### LIGHT OUTPUT

2400 lux @ 0.3m at 3000 fpm  
1600 lux @ 0.3m at 6000 fpm



### HD-851



For ultimate power, coverage and distance from the web. The HD851 illuminates 1.25m x 1.25m from 1.25m distance. Can be interconnected with up to 4 other units. Requires remote controller.

#### FEATURES

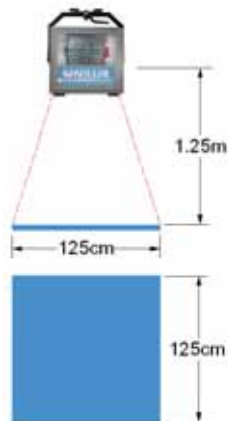
- Quick change power module
  - Long life snap in lamp
  - Press to test switch
- Automatic line speed tracking
- Deluxe or micro remote control

#### ENERGY OUTPUT

4 joules @ 6000 fpm  
8 joules @ 3000 fpm

#### LIGHT OUTPUT

3200 lux @ 1.2m at 6000 fpm  
6400 lux @ 1.2m at 3600 fpm



### Sentry



Two light heads provide 800 watts for even illumination of 1.25m x 2.5m from a 1.25m distance. Edge to edge coverage allows inspection of strips up to 2.5m wide. This light can interconnect to a second system for dual side inspection.

#### FEATURES

- Internal and remote control
  - Long life snap in lamp
- Automatic line speed tracking
- Self diagnostic maintenance guides
  - Two year warranty

#### ENERGY OUTPUT

4 joules @ 6000fpm

#### LIGHT OUTPUT

2000 Lux @ 1.5 meters



### Centurion



Designed for use on lines where wrecks and cobbles could occur. Two high power 800 watt light heads are designed to be mounted 2.5m from the strip to avoid damage, providing 1600 watts of power to cover 3m of width.

#### FEATURES

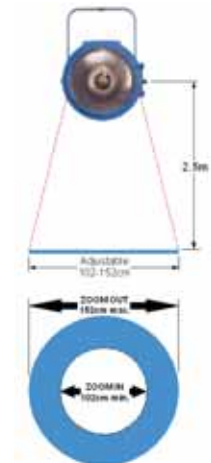
- Adjustable for flood or spot pattern
  - Multiple intensity settings
- Automatic line speed tracking
- Internal and remote control
- Self diagnostic maintenance

#### ENERGY OUTPUT

8 joules per flash @6000 fpm

#### LIGHT OUTPUT

2000 Lux @ 2.4 meters



# See more detail with UNILUX

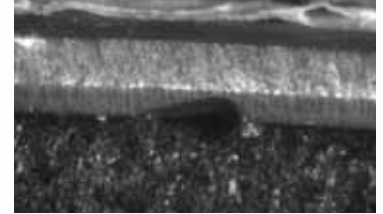
UNILUX offers power and performance to meet your exact needs. From the portable battery-operated Miti-Lite to the high power Centurion, UNILUX and their 45 years of experience can be put to work for you. UNILUX manufactures over 45 different models of inspection lights allowing you to inspect 100% of your strip, anywhere in the process. Simplistic and effective in operation with immediate results from the second you turn it on, coupled with an easy installation, provides you complete payback for your system in days to weeks. Ask about our remote video inspection system for inaccessible areas or to see real time surface condition with line scan systems.

Plus with service centers located in the United States, the United Kingdom, China, Korea, Brazil, Mexico and Spain, Unilux is committed to providing our customers with the world-class support they deserve.

Contact Unilux for a free in-house demonstration and see the difference.

**For more information or to order online,  
go to [www.UNILUX.com](http://www.UNILUX.com)**

**UNILUX Q-Eye system  
provides fine detail inspection  
in remote locations**



**Edge detection**



**Surface detection**



**UNILUX, INC.**  
59 North 5th Street  
Saddle Brook, NJ  
USA  
(001) 201-712-1266 (t)  
(001) 201-712-1366 (f)  
dalexander@unilux.com  
Dave Alexander

**UNILUX ASIA**  
179/177 Supalai Place  
Sukhumvit Soi 39  
Bangkok, Thailand 10110  
(66) 086-977-1303 (t)  
(66) 02-662-0022 (f)  
kirk@unilux.com  
Kirk Nell

**UNILUX CHINA**  
Apt. 10-B  
1081-1089 Pudong Ave  
Shanghai, China 200135  
(86) 021-68552511 (t)  
(86) 021-68552512 (f)  
joezhao@unilux.com  
Joe Zhao

**UNILUX EMEA**  
Friedingstrasse 48  
40625 Düsseldorf  
Germany  
(49) 211-28071171 (t)  
(49) 211-28071177 (f)  
vschlevoigt@unilux.com  
Volker Schlevoigt

**UNILUX INDIA**  
D-169, Karamapura  
Shivaji Marg, New Delhi  
110 015  
India  
(91) 98-1899-6772 (t)  
ashwani@unilux.com  
Ashwani Kumar



**UNILUX**

**Bringing Quality to Light**