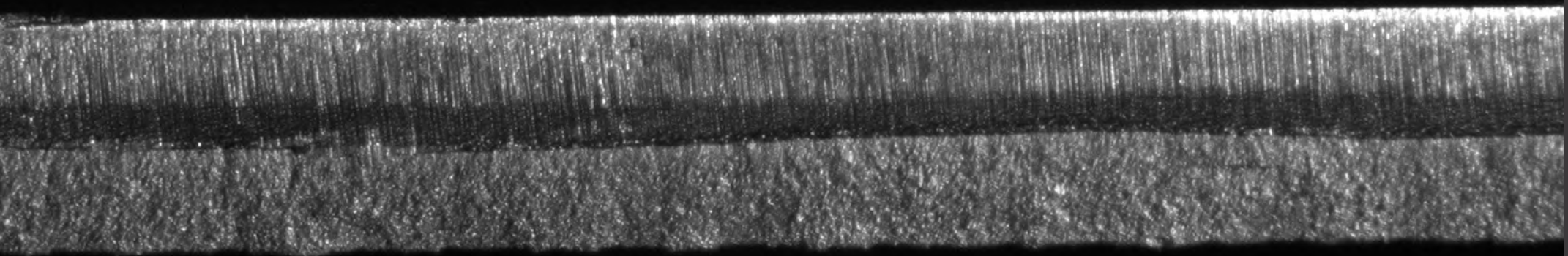
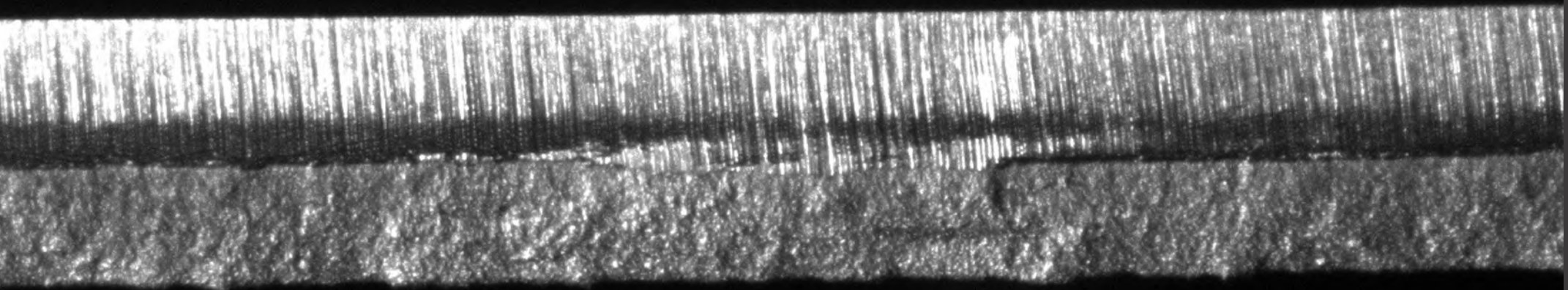



**EDGE  
TECH**  
VISION SYSTEM

FLAWLESS TRIM COIL AFTER COIL



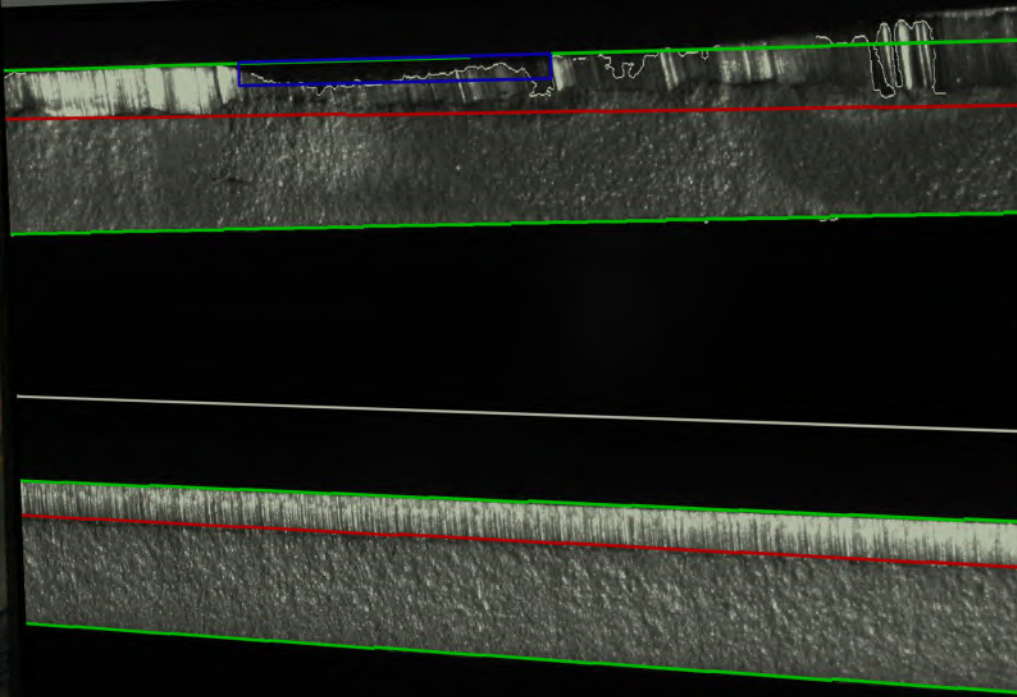




*We no longer have to wait for three coils to be processed prior to confirming trimming quality, which can possibly become scrap.*

*– Larry Malone, PLTCM Process Manager – Big River Steel*





INSPECTION

2-Step Live Knife Defect Detect  
 Review Stop Knife Review Defect Review

DATE 0000  
 TIME 0000  
 COIL ID 0000



DEFECT COUNT 0000

PLAYBACK

57 1  
 [Progress bar]

STGR 0000  
 TRIM 0000  
 LENGTH 0000

IMAGE

Zoom In + Zoom Out -  
 Show Grid 0.00 MM  
 Mark Region 0.00 MM 0.00 MM  
 Save Samples

COMM

SPEED I01 I02  
 300 [Red] [Green]  
 SAMPLES [Red] L2 [Green]  
 DISK SPACE 30%

STATUS

Inspection Defect Review  
 Playback Stopped  
 Zoom% 100%

DEFECT DETECT  
 IDLE

CAMERA HEIGHT

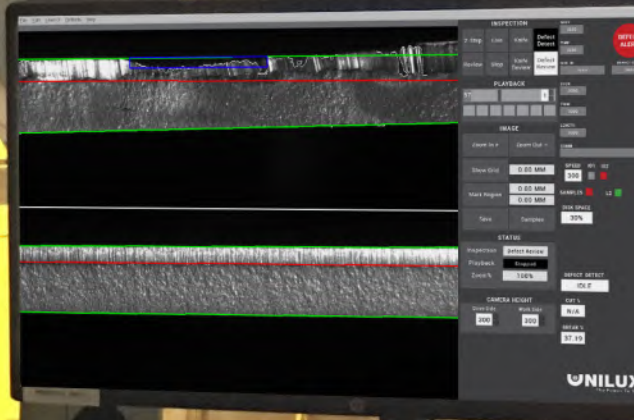
Drive Side 300 Work Side 300

CUT % N/A  
 BREAK % 37.19

# MORE INSIGHT. MORE OPTIONS. LESS SCRAP.

For the first time mills can monitor coil edge quality and see knife wear in real time. Make necessary adjustments long before the coil is complete, eliminating the need for additional processes like re-trim and the cost of rejected or downgraded coils.





Technical drawing or inspection checklist with tables and diagrams.

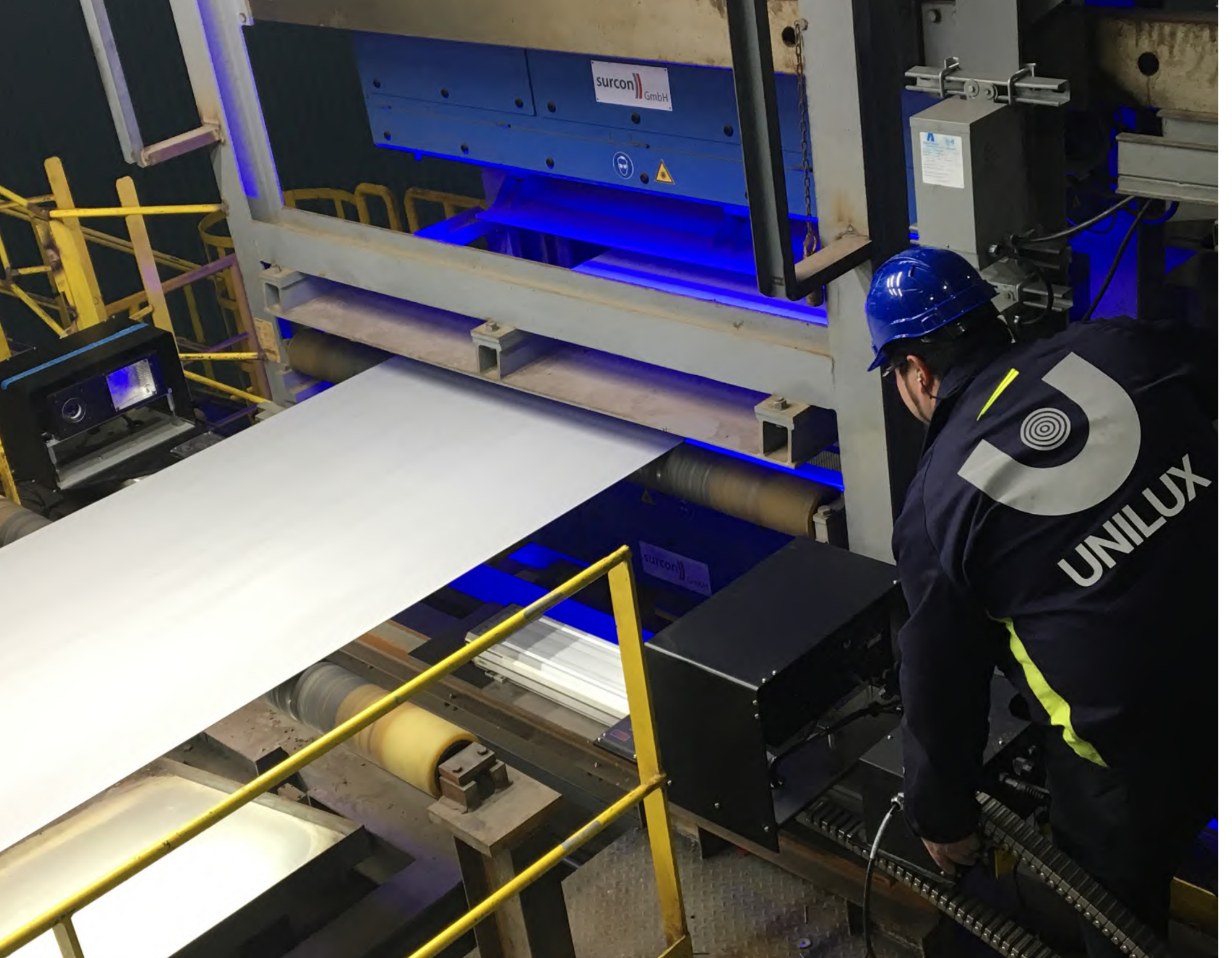
Item	Value
1	
2	
3	
4	
5	
6	
7	
8	
9	
10	
11	
12	
13	
14	
15	
16	
17	
18	
19	
20	

Handwritten notes or checklist on a piece of paper.

# MONITOR QUALITY FROM THE SAFETY OF THE PULPIT.

Improve operator safety by limiting interaction with the line to only when necessary. Edge Tech captures and magnifies edge quality to show critical settings like lap and gap and symptoms of knife wear like burrs and sawtooth, far from the hazards of the line.







# FULL-TIME SUPPORT FROM INSPECTION EXPERTS

Unilux systems are built upon decades of experience in the world's harshest manufacturing environments. These teams have tested, pushed, and broken every product in actual operation. As a result, Unilux inspection systems are proven to improve efficiency while performing consistently, day after profitable day. Only Unilux has a team dedicated to keeping you up and running. So we'll be there to minimize the impact of any unscheduled downtime. Not a lot of companies can say that with confidence. We have the history to prove it.

# INSPECTION TECHNOLOGY FOR TODAY (AND TOMORROW).

Retrofit existing lines with Edge Tech today and start gathering intelligence to increase efficiency and yield. Machine learning features provide faster response to defects identified as critical for your operation, which will help you to keep up with the production needs of tomorrow. Invest today with the benefit of knowing you can upgrade as new features are released.

## FEATURES

### **AUTO DEFECT DETECT ALERT**

Over 2 million images have been gathered over the life of Edge Tech. This image library has been analyzed to identify the telltale signs of a bad edge just as it is beginning. Now a learning system, Edge Tech can identify bad edges in real time, so adjustments can be made to correct the issue, such as changing knives or correcting critical settings, before they become quality issues.

### **FULL KNIFE CAPTURE**

Edge Tech can document a full revolution of trim blades in each coil. Operators can be proactive and recognize the repetitive nature of a knife crack as it is just beginning. They can use this information to schedule maintenance when it is most convenient.

### **CUT TO BREAK RATIO**

Maintain the ideal mechanical settings for the perfect edge by the number - not just a visual estimation or guess. Alerts are defined based upon the specific needs of the coil. These values can be documented and referenced for variables like metallurgic properties and upstream processing. Operators are notified when actual results are out of range.



# SPECIFICATIONS

## HARDWARE CONFIGURATION OPTIONS:

### CAMERAS & TRACKERS:

(2) Cameras and Strobe Housing.

(2) Edge Trackers. Tracker Cables are available in two configurable options.

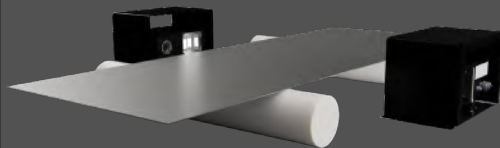
Rear Carrier Loop & Under Carrier Loop.

### CAMERAS ONLY:

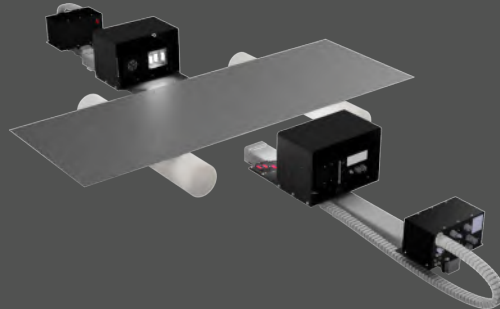
(2) Camera & Strobe Housing



Camera Box On Carrier Plate



Sample Installation with  
Cameras Only and No Trackers



Sample Installation with 2 Cameras  
& 2 Trackers. Edge Trackers  
(edge positioning controls)  
Shown with the Rear Carrier Loop

## SOFTWARE:

- High Resolution capture - 1296 x 500 image shown on monitor per camera
- Monitor resolution 2560 x 1440, 25" 16:9 (with Edge Tech window resolution 1920 x 1080)

## COMPUTER & CAMERA HARDWARE SPECIFICATIONS

- Multi-core CPU (Intel® Xenon, 16-Core™ @ 2.1Ghz), 16 GB RAM
- Microsoft Windows 10 LTSC
- 512 GB System SATA Hard Drive or SSD (System)
- 14 TB Data SATA Hard Drive (Storage)
- Nvidia G-force PCI Express Video Card
- Two (2) 1.4 Mega Pixel CCD Camera B/W capturing up to 150 FPS
- LED stroboscopic light engine

## IMAGE SEQUENCE PLAYBACK & LEVEL 2 INTERFACE

- Selectable frame rates: 1 fps, 2 fps, 5 fps, 10 fps and 15 fps.
- Stop, Pause, Play, Back one frame, Forward one frame, Back to first frame, Forward to last Frame, Play-loop (available for Image Buffer review, Full Knife Circumference defects review, and 100% Inspection defects review).
- Data display of line speed, time, date, coil ID, coil grade, coil length, edge trim quantity and notes on-screen when integrated to mill's Level 2.integrated to mill's Level 2.

## DATA STORAGE

- Base system is equipped with 14TB of storage (for approximately 10 million edge image samples)

# SEE A DEMO ON YOUR LINE

[WWW.UNILUX.COM](http://WWW.UNILUX.COM)



**UNILUX<sup>®</sup>**  
The Power To See